

A46 Newark Bypass

TR010065/APP/2.6

2.6 Engineering Plans and Sections Part 5 – Drainage Engineering Plans

APFP Regulation 5(2)(o), 5(2)(p) and 6(2)

Planning Act 2008

Infrastructure Planning (Applications: Prescribed Forms and
Procedure) Regulations 2009

Volume 2

April 2024

Infrastructure Planning

Planning Act 2008

**The Infrastructure Planning
(Applications: Prescribed Forms
and Procedure) Regulations 2009**

A46 Newark Bypass

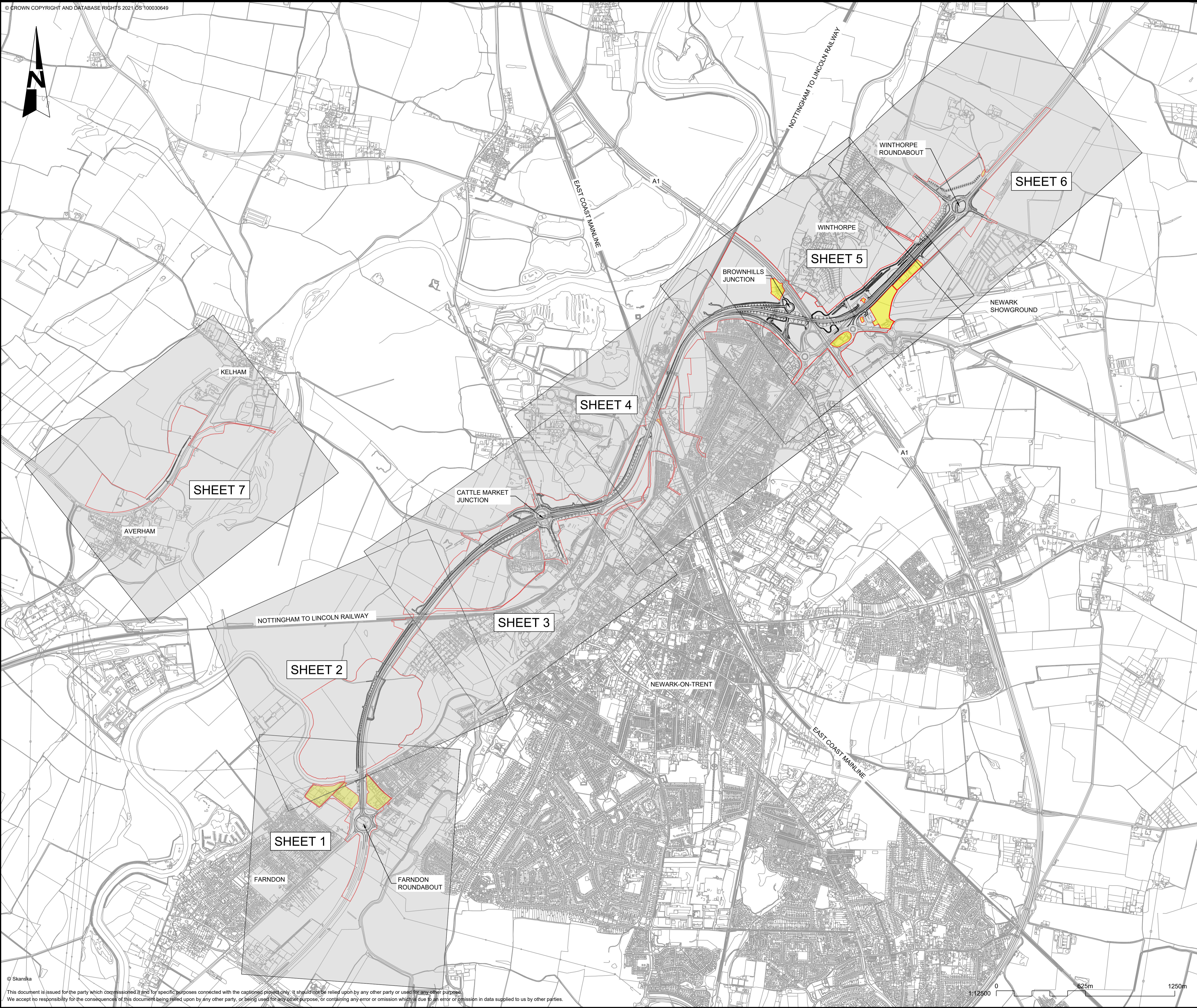
Development Consent Order 202[x]

Engineering Plans and Sections

Part 5 – Drainage Engineering Plans

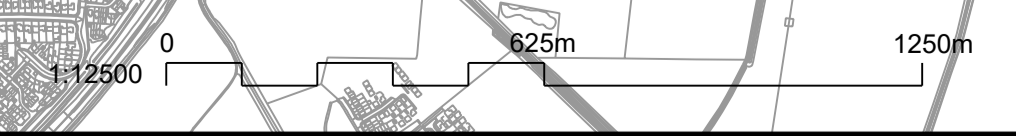
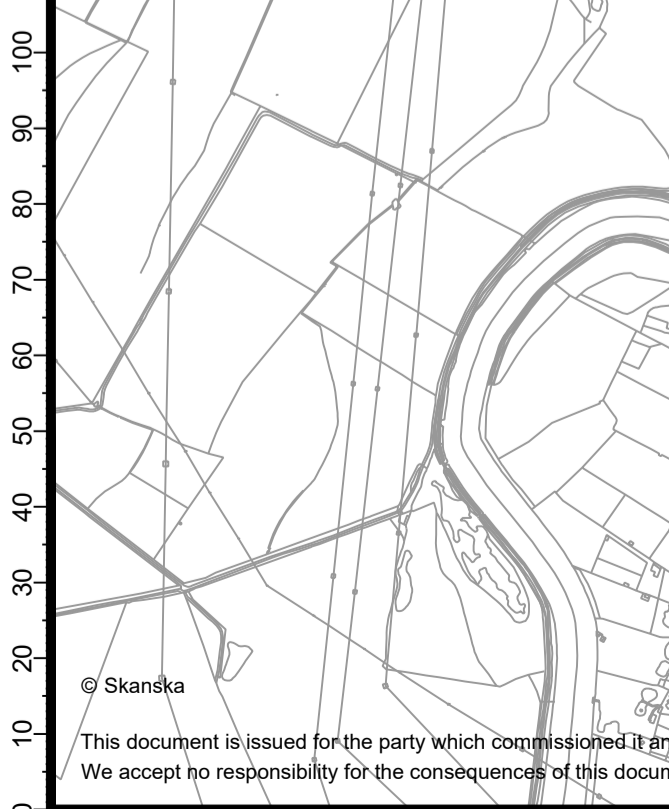
Regulation Number:	Regulation 5(2)(o), 5(2)(p) and 6(2)
Planning Inspectorate Scheme Reference	TR010065
Application Document Reference	TR010065/APP/2.6
Author:	A46 Newark Bypass Project Team, National Highways

Version	Date	Status of Version
Rev 1	April 2024	DCO Application



NOTES
 1. THE PURPOSE OF THIS DRAWING IS TO SUPPORT THE A46 NEWARK BYPASS DEVELOPMENT CONSENT ORDER (DCO) APPLICATION.

KEY:
 ORDER LIMITS
 LAND NOT INCLUDED IN ORDER LIMITS
 DESIGN LAYOUT



C02	11/03/24	Revised for DCO Submission	JK	SC	HF
REV.	DATE	AMENDMENT DETAILS	ORIG	CHK'D	APP'D

CLIENT

PURPOSE OF ISSUE
 DCO APPLICATION

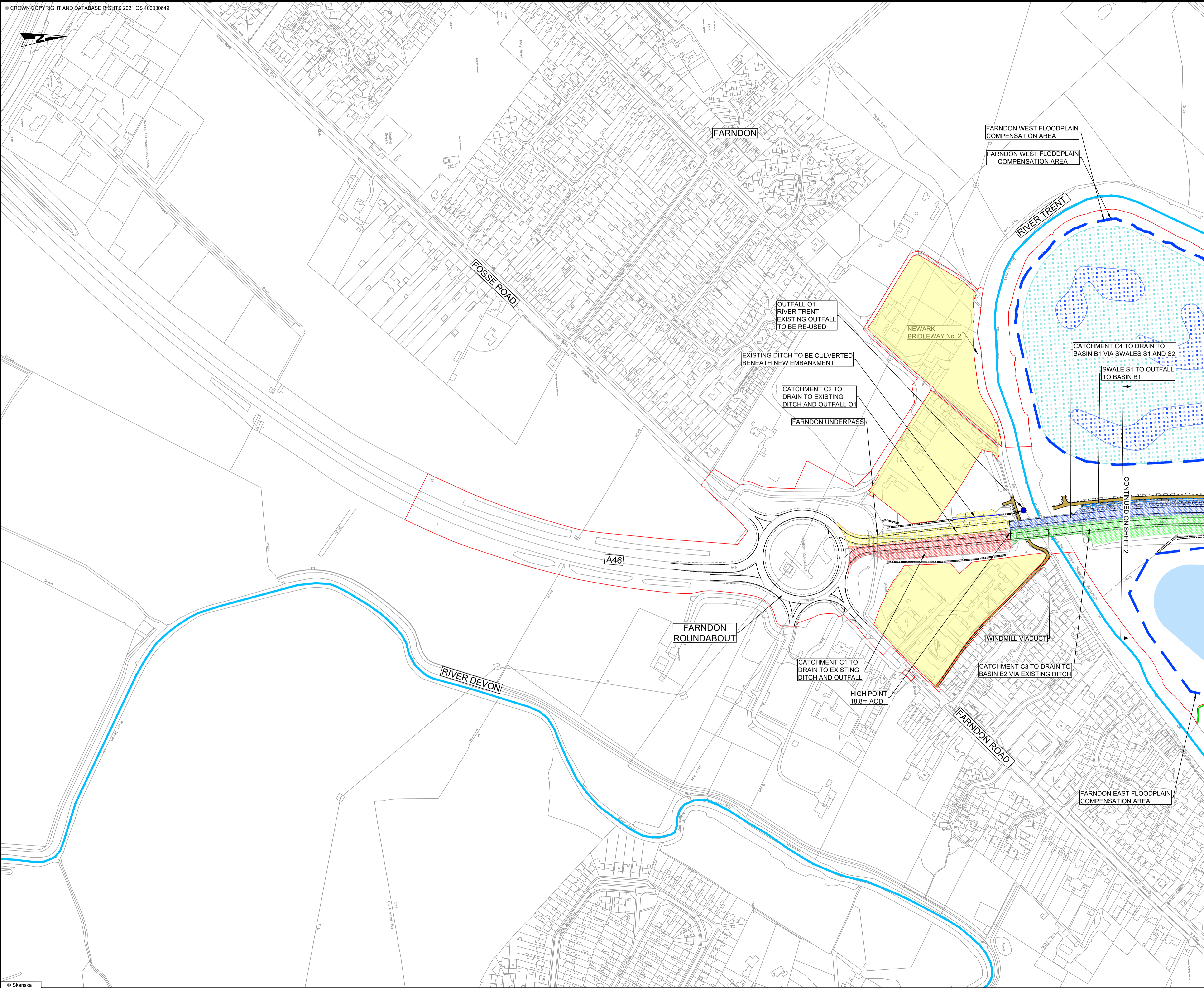
DEVELOPMENT CONSENT ORDER NUMBER
 TR010065

PROJECT TITLE
 A46 NEWARK BYPASS

DRAWING TITLE
 DRAINAGE ENGINEERING PLAN
 REGULATION 5(2)(o), 5(2)(P) and 6(2)
 KEY PLAN

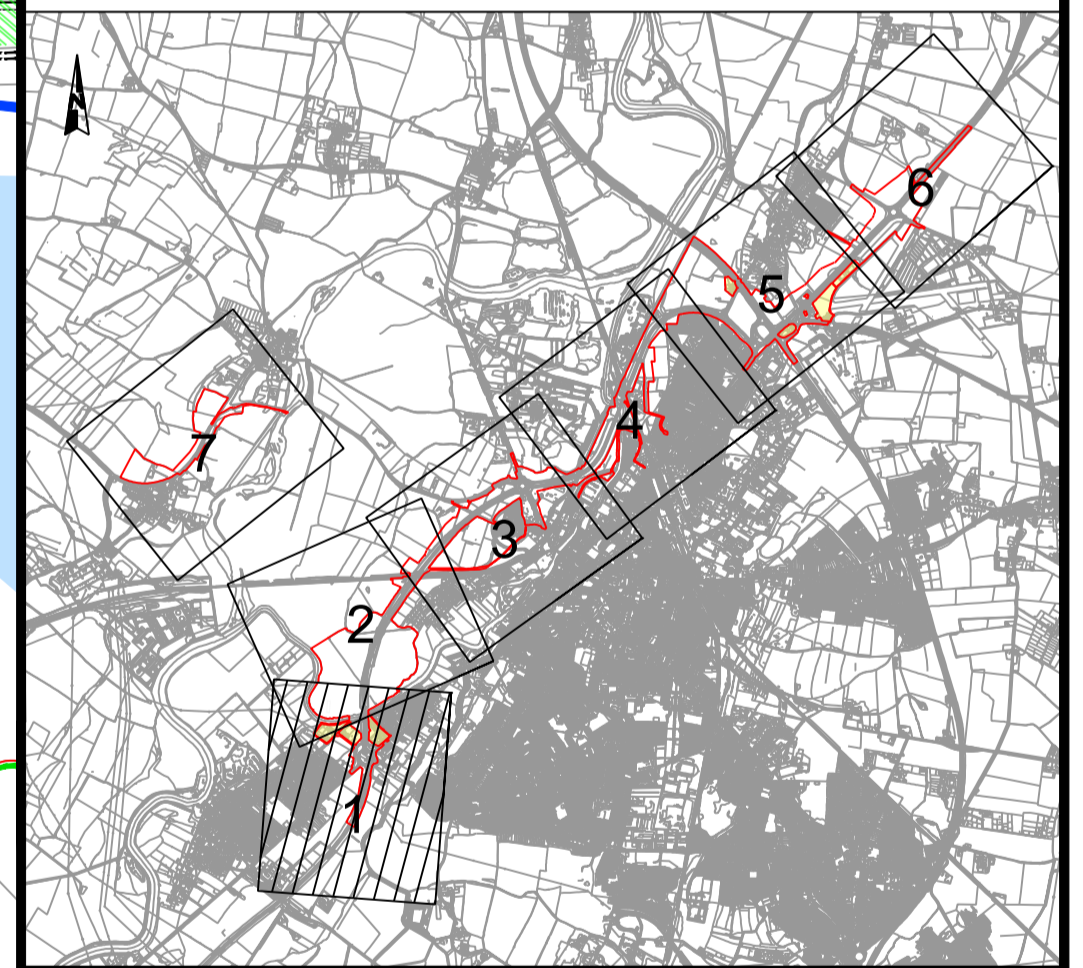
ORIGINAL SIZE	A1	SCALE	1:12500	PROJECT REF NO.	HE551478
---------------	----	-------	---------	-----------------	----------

DRAWING NUMBER	ORIGINATOR	VOLUME	PROJECT REF NO.
HE551478	SKAG	HDG	HE551478
CONWI_CONW	DR	CD	REVISION
LOCATION	TYPE	ROLE	NUMBER
			C02



- NOTES**
1. ALL DIMENSIONS ARE IN METRES UNLESS OTHERWISE STATED.
 2. DO NOT SCALE FROM THIS DRAWING USE ONLY PRINTED DIMENSIONS.
 3. THE DESIGN SHOWN WILL BE SUBJECT TO DETAILED DESIGN DEVELOPMENT IN ACCORDANCE WITH THE PROVISIONS OF THE DEVELOPMENT CONSENT ORDER (TR010065/APP/3.1).
 4. THE NAMING OF THE CATCHMENT AREAS ARE TO DIFFERENTIATE BETWEEN THEM AND ARE FOR THE PURPOSE OF THE DRAINAGE ENGINEERING PLANS ONLY.
 5. THESE DRAINAGE PLANS SHOULD BE READ IN CONJUNCTION WITH ALL OTHER RELEVANT PLANS AND DOCUMENTATION.

- KEY**
- ORDER LIMITS
 - LAND NOT INCLUDED IN ORDER LIMITS
 - MAIN RIVER MAINTAINED BY ENVIRONMENT AGENCY
 - ORDINARY WATERCOURSE MAINTAINED BY NOTTINGHAMSHIRE COUNTY COUNCIL
 - OVERFLOW BASIN MAINTAINED BY NATIONAL HIGHWAYS
 - MAIN BASIN MAINTAINED BY NATIONAL HIGHWAYS
 - POND MAINTAINED BY NATIONAL HIGHWAYS
 - BASIN FOREBAY MAINTAINED BY NATIONAL HIGHWAYS
 - FLOW PATH MAINTAINED BY NATIONAL HIGHWAYS
 - NEW SWALE/DITCH MAINTAINED BY NATIONAL HIGHWAYS
 - EXISTING SWALE/DITCH TO REMAIN
 - NEW FILTER DRAIN MAINTAINED BY NATIONAL HIGHWAYS
 - OUTFALL MAINTAINED BY NATIONAL HIGHWAYS
 - OUTFALL MAINTAINED BY NOTTINGHAMSHIRE COUNTY COUNCIL
 - DIRECTION OF FLOW TO OUTFALL
 - ACCESS AND MAINTENANCE TRACK (INCLUDES CUTOFF DRAIN) MAINTAINED BY NATIONAL HIGHWAYS
 - EMBANKMENT
 - CUTTING
 - WETLAND SHELF TO ACCOMMODATE FLOOD COMPENSATION
 - WETLAND BASIN
 - NEW PIPED CULVERT
 - NEW LAKE
 - LIMITS OF DEVIATION OF FLOOD COMPENSATION AREA
 - CATCHMENT C1
 - CATCHMENT C2
 - CATCHMENT C3
 - CATCHMENT C4



REV.	DATE	AMENDMENT DETAILS	ORIG	CHK'D	APP'D
C02	11/03/24	Revised for DCO Submission	JK	SC	HF

CLIENT
 national highways

PURPOSE OF ISSUE
 DCO APPLICATION

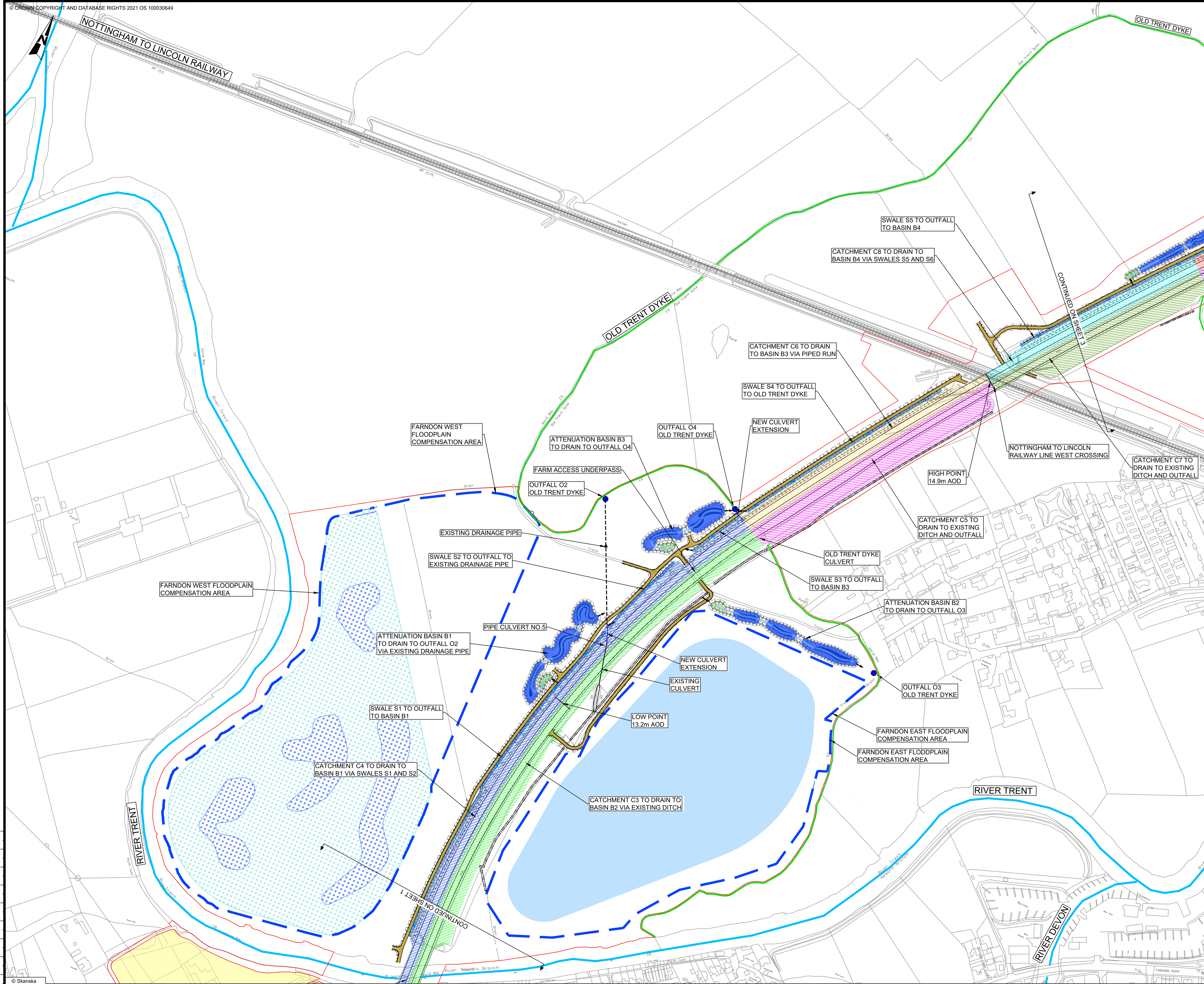
DEVELOPMENT CONSENT ORDER NUMBER
 TR010065

PROJECT TITLE
 A46 NEWARK BYPASS

DRAWING TITLE
 DRAINAGE ENGINEERING PLAN
 REGULATION 5(2)(o), 5(2)(P) and 6(2)
 SHEET 1 OF 7

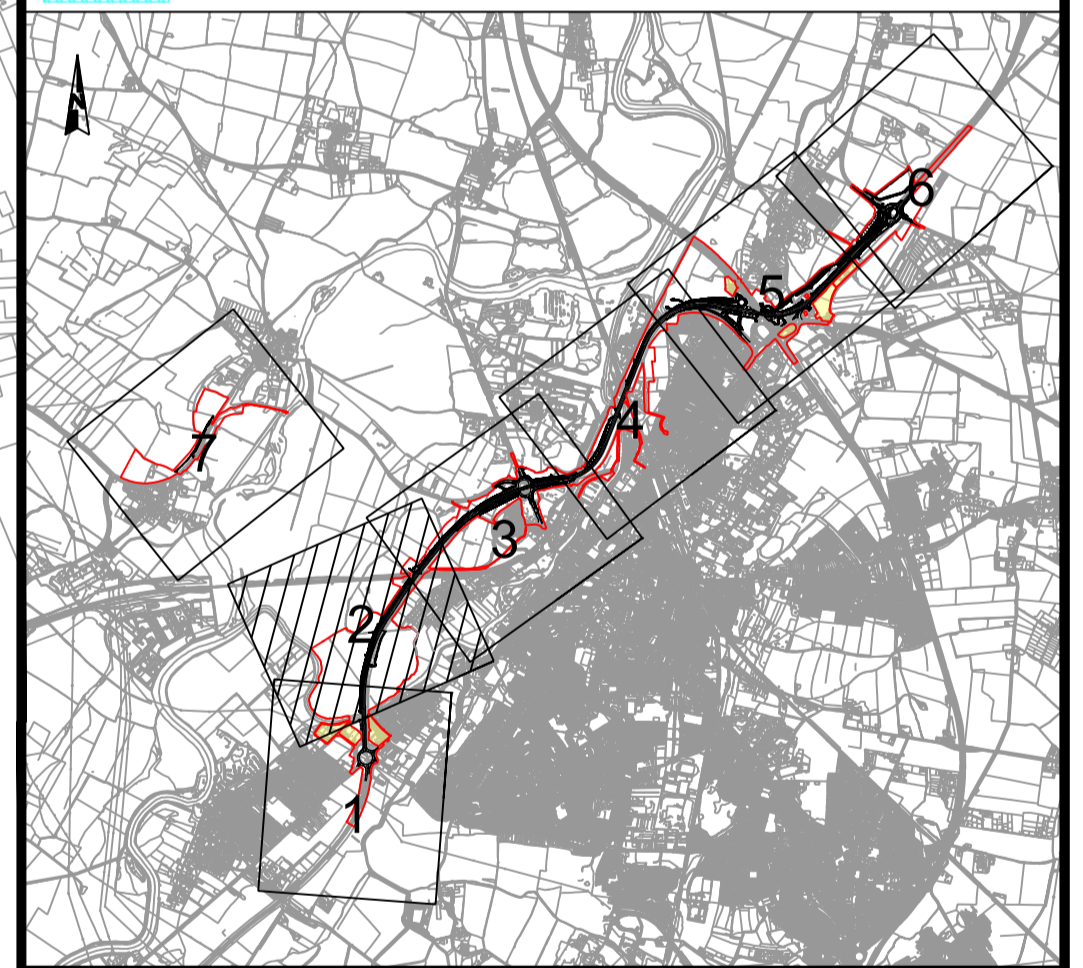
ORIGINAL SIZE	A1	SCALE	1:2500
---------------	----	-------	--------

DRAWING NUMBER	ORIGINATOR	VOLUME	PROJECT REF NO.
HE PIN			HE551478
HE551478	SKAG	HDG	
CONWI_CONW	DR	CD	REVISION
LOCATION	TYPE	ROLE	NUMBER
			C02



- NOTES**
1. ALL DIMENSIONS ARE IN METRES UNLESS OTHERWISE STATED.
 2. DO NOT SCALE FROM THIS DRAWING USE ONLY PRINTED DIMENSIONS.
 3. THE DESIGN SHOWN WILL BE SUBJECT TO DETAILED DESIGN DEVELOPMENT IN ACCORDANCE WITH THE PROVISIONS OF THE DEVELOPMENT CONSENT ORDER (TR010065/APP/3.1).
 4. THE NAMING OF THE CATCHMENT AREAS ARE TO DIFFERENTIATE BETWEEN THEM AND ARE FOR THE PURPOSE OF THE DRAINAGE ENGINEERING PLANS ONLY.
 5. THESE DRAINAGE PLANS SHOULD BE READ IN CONJUNCTION WITH ALL OTHER RELEVANT PLANS AND DOCUMENTATION.

- KEY**
- ORDER LIMITS
 - LAND NOT INCLUDED IN ORDER LIMITS
 - MAIN RIVER MAINTAINED BY ENVIRONMENT AGENCY
 - ORDINARY WATERCOURSE MAINTAINED BY NOTTINGHAMSHIRE COUNTY COUNCIL
 - OVERFLOW BASIN MAINTAINED BY NATIONAL HIGHWAYS
 - MAIN BASIN MAINTAINED BY NATIONAL HIGHWAYS
 - POND MAINTAINED BY NATIONAL HIGHWAYS
 - BASIN FOREBAY MAINTAINED BY NATIONAL HIGHWAYS
 - FLOW PATH MAINTAINED BY NATIONAL HIGHWAYS
 - NEW SWALE/DITCH MAINTAINED BY NATIONAL HIGHWAYS
 - EXISTING SWALE/DITCH TO REMAIN
 - NEW FILTER DRAIN MAINTAINED BY NATIONAL HIGHWAYS
 - OUTFALL MAINTAINED BY NATIONAL HIGHWAYS
 - OUTFALL MAINTAINED BY NOTTINGHAMSHIRE COUNTY COUNCIL
 - DIRECTION OF FLOW TO OUTFALL
 - ACCESS AND MAINTENANCE TRACK (INCLUDES CUTOFF DRAIN) MAINTAINED BY NATIONAL HIGHWAYS
 - EMBANKMENT
 - CUTTING
 - WETLAND SHELF TO ACCOMMODATE FLOOD COMPENSATION
 - WETLAND BASIN
 - NEW PIPED CULVERT
 - NEW LAKE
 - LIMITS OF DEVIATION OF FLOOD COMPENSATION AREA
 - CATCHMENT C3
 - CATCHMENT C4
 - CATCHMENT C5
 - CATCHMENT C6
 - CATCHMENT C7
 - CATCHMENT C8



C02	11/03/24	Revised for DCO Submission	JK	SC	HF
REV.	DATE	AMENDMENT DETAILS	ORIG	CHK'D	APP'D

CLIENT
 national highways

PURPOSE OF ISSUE
 DCO APPLICATION

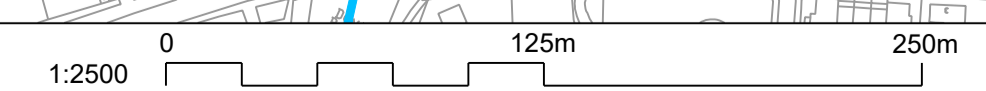
DEVELOPMENT CONSENT ORDER NUMBER
 TR010065

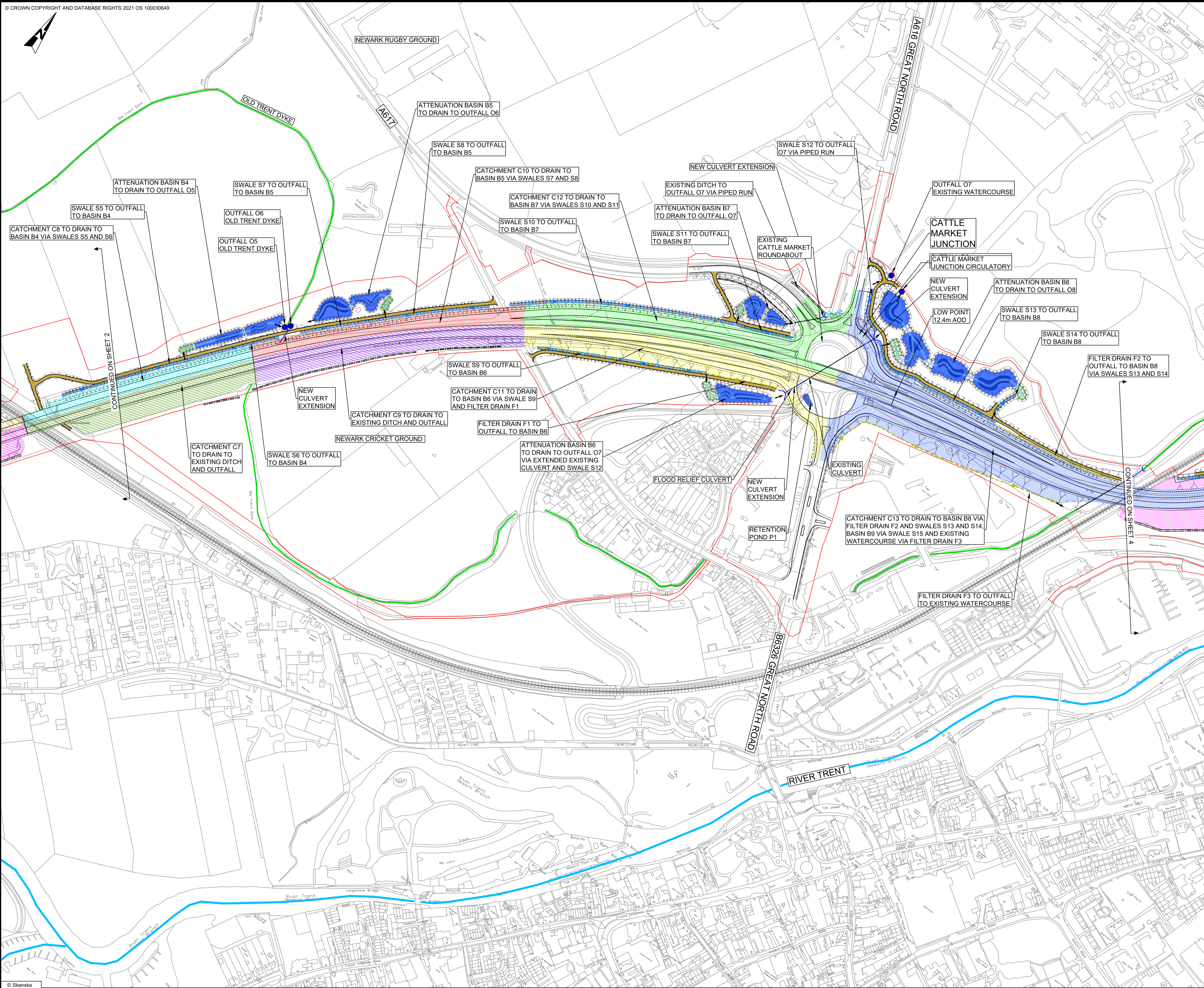
PROJECT TITLE
 A46 NEWARK BYPASS

DRAWING TITLE
 DRAINAGE ENGINEERING PLAN
 REGULATION 5(2)(a), 5(2)(P) and 6(2)
 SHEET 2 OF 7

ORIGINAL SIZE	A1	SCALE	1:2500
---------------	----	-------	--------

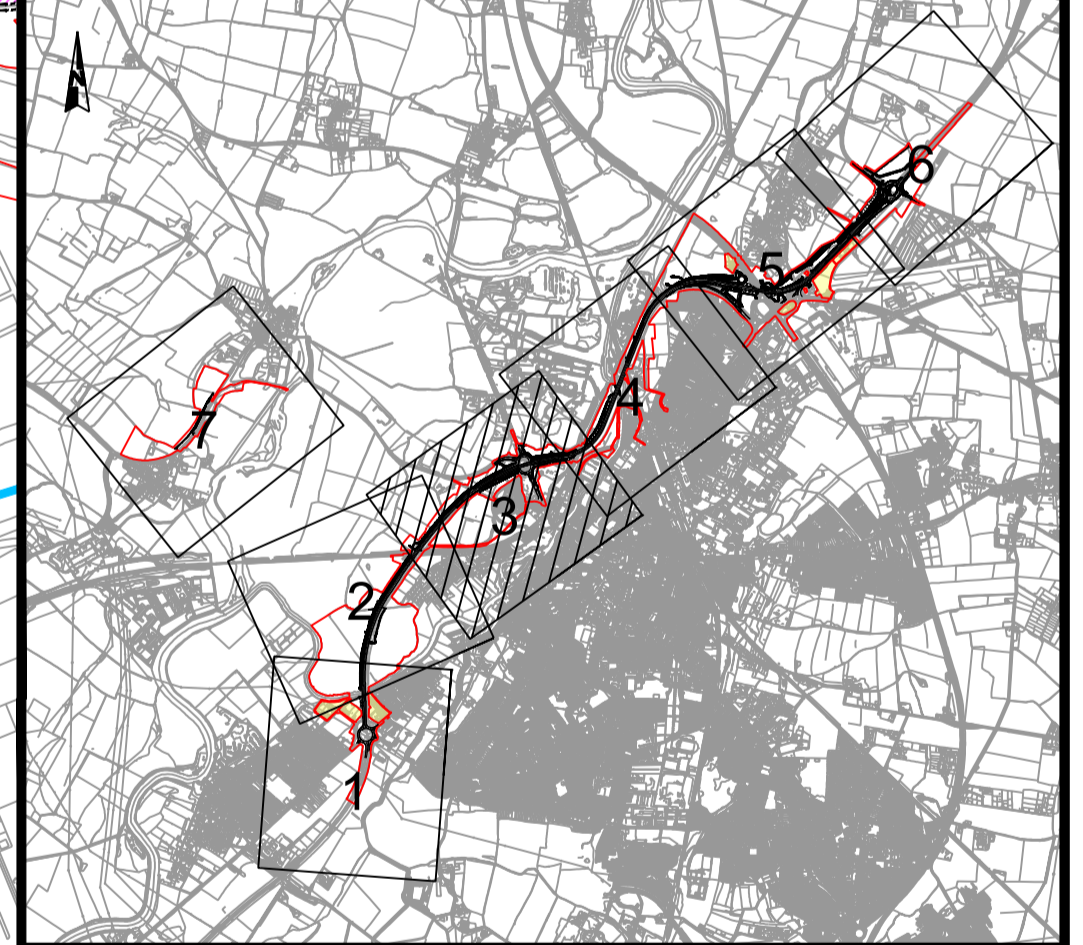
DRAWING NUMBER HE PIN	ORIGINATOR	VOLUME	PROJECT REF NO.
HE551478	SKAG	HDG	HE551478
LOCATION	TYPE	ROLE	REVISION
CONWI_CONW	DR	CD	C02
		NUMBER	
		26302	





- NOTES**
1. ALL DIMENSIONS ARE IN METRES UNLESS OTHERWISE STATED.
 2. DO NOT SCALE FROM THIS DRAWING USE ONLY PRINTED DIMENSIONS.
 3. THE DESIGN SHOWN WILL BE SUBJECT TO DETAILED DESIGN DEVELOPMENT IN ACCORDANCE WITH THE PROVISIONS OF THE DEVELOPMENT CONSENT ORDER (TR010065/APP/3.1).
 4. THE NAMING OF THE CATCHMENT AREAS ARE TO DIFFERENTIATE BETWEEN THEM AND ARE FOR THE PURPOSE OF THE DRAINAGE ENGINEERING PLANS ONLY.
 5. THESE DRAINAGE PLANS SHOULD BE READ IN CONJUNCTION WITH ALL OTHER RELEVANT PLANS AND DOCUMENTATION.

- KEY**
- ORDER LIMITS
 - LAND NOT INCLUDED IN ORDER LIMITS
 - MAIN RIVER MAINTAINED BY ENVIRONMENT AGENCY
 - ORDINARY WATERCOURSE MAINTAINED BY NOTTINGHAMSHIRE COUNTY COUNCIL
 - OVERFLOW BASIN MAINTAINED BY NATIONAL HIGHWAYS
 - MAIN BASIN MAINTAINED BY NATIONAL HIGHWAYS
 - POND MAINTAINED BY NATIONAL HIGHWAYS
 - BASIN FOREBAY MAINTAINED BY NATIONAL HIGHWAYS
 - FLOW PATH MAINTAINED BY NATIONAL HIGHWAYS
 - NEW SWALE/DITCH MAINTAINED BY NATIONAL HIGHWAYS
 - EXISTING SWALE/DITCH TO REMAIN
 - NEW FILTER DRAIN MAINTAINED BY NATIONAL HIGHWAYS
 - OUTFALL MAINTAINED BY NATIONAL HIGHWAYS
 - OUTFALL MAINTAINED BY NOTTINGHAMSHIRE COUNTY COUNCIL
 - DIRECTION OF FLOW TO OUTFALL
 - ACCESS AND MAINTENANCE TRACK (INCLUDES CUTOFF DRAIN) MAINTAINED BY NATIONAL HIGHWAYS
 - EMBANKMENT
 - CUTTING
 - NEW PIPED CULVERT
 - CATCHMENT C7
 - CATCHMENT C8
 - CATCHMENT C9
 - CATCHMENT C10
 - CATCHMENT C11
 - CATCHMENT C12
 - CATCHMENT C13
 - CATCHMENT C14



REV.	DATE	AMENDMENT DETAILS	ORIG	CHK'D	APP'D
C02	11/03/24	Revised for DCO Submission	JK	SC	HF

CLIENT
 national highways

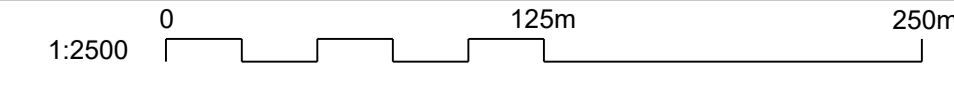
PURPOSE OF ISSUE
 DCO APPLICATION

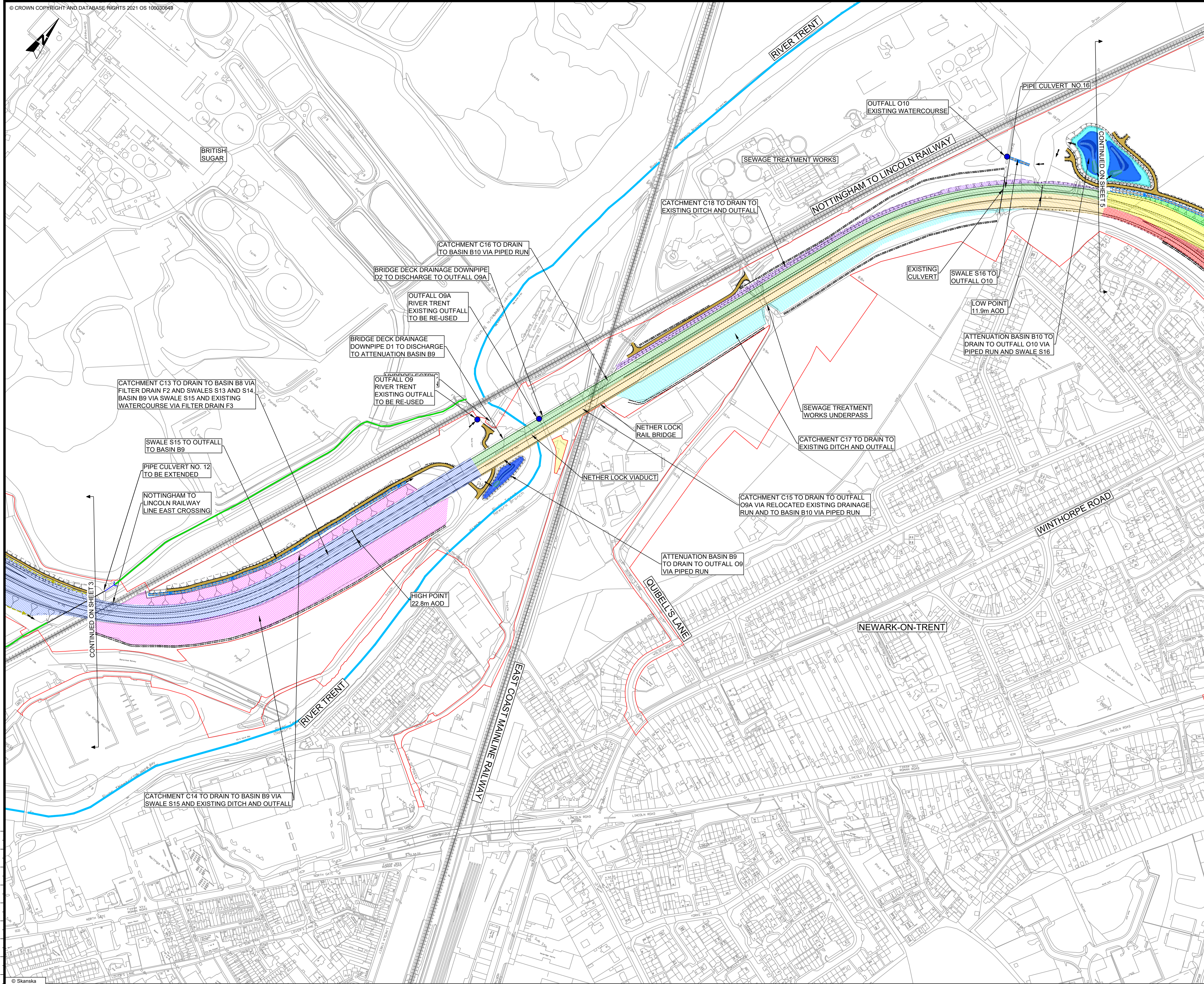
DEVELOPMENT CONSENT ORDER NUMBER
 TR010065

PROJECT TITLE
 A46 NEWARK BYPASS

DRAWING TITLE
 DRAINAGE ENGINEERING PLAN
 REGULATION 5(2)(c), 5(2)(P) and 6(2)
 SHEET 3 OF 7

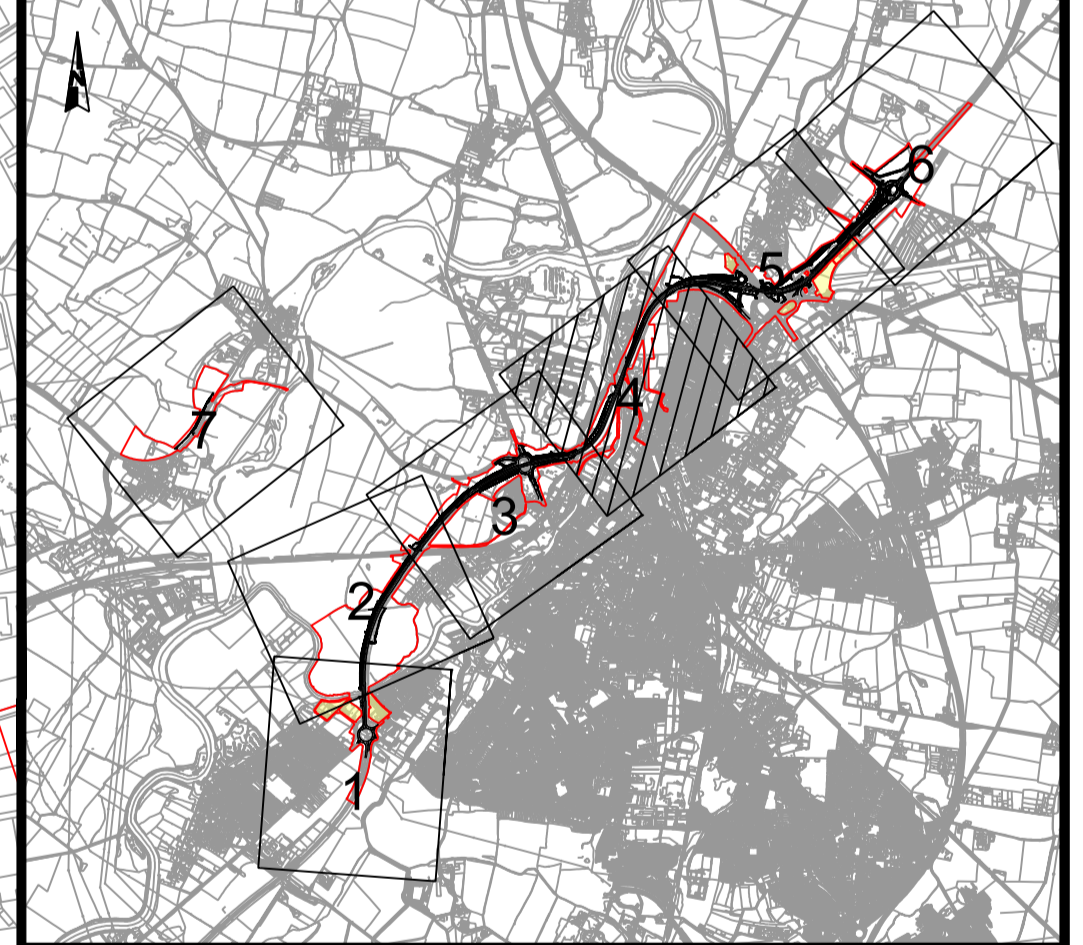
ORIGINAL SIZE	A1	SCALE	1:2500	PROJECT REF NO.	HE551478
DRAWING NUMBER	HE551478	ORIGINATOR	SKAG	VOLUME	HDG
LOCATION	CONWI_CONW	TYPE	DR CD	NUMBER	26303
REVISION	C02				





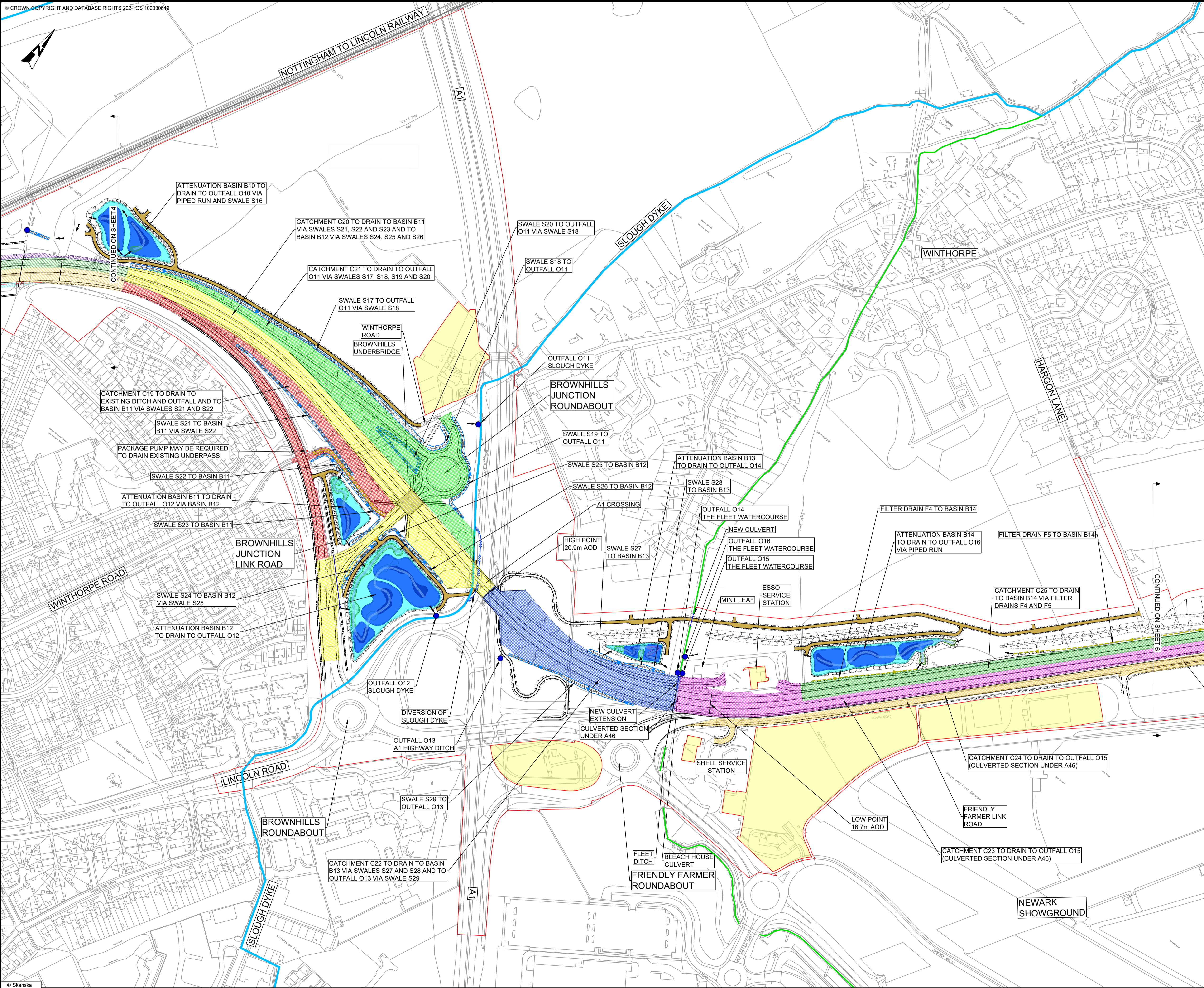
- NOTES**
1. ALL DIMENSIONS ARE IN METRES UNLESS OTHERWISE STATED.
 2. DO NOT SCALE FROM THIS DRAWING USE ONLY PRINTED DIMENSIONS.
 3. THE DESIGN SHOWN WILL BE SUBJECT TO DETAILED DESIGN DEVELOPMENT IN ACCORDANCE WITH THE PROVISIONS OF THE DEVELOPMENT CONSENT ORDER (TR010065/APP/3.1).
 4. THE NAMING OF THE CATCHMENT AREAS ARE TO DIFFERENTIATE BETWEEN THEM AND ARE FOR THE PURPOSE OF THE DRAINAGE ENGINEERING PLANS ONLY.
 5. THESE DRAINAGE PLANS SHOULD BE READ IN CONJUNCTION WITH ALL OTHER RELEVANT PLANS AND DOCUMENTATION.

- KEY**
- ORDER LIMITS
 - LAND NOT INCLUDED IN ORDER LIMITS
 - MAIN RIVER MAINTAINED BY ENVIRONMENT AGENCY
 - ORDINARY WATERCOURSE MAINTAINED BY NOTTINGHAMSHIRE COUNTY COUNCIL
 - OVERFLOW BASIN MAINTAINED BY NATIONAL HIGHWAYS
 - MAIN BASIN MAINTAINED BY NATIONAL HIGHWAYS
 - POND MAINTAINED BY NATIONAL HIGHWAYS
 - BASIN FOREBAY MAINTAINED BY NATIONAL HIGHWAYS
 - FLOW PATH MAINTAINED BY NATIONAL HIGHWAYS
 - NEW SWALE/DITCH MAINTAINED BY NATIONAL HIGHWAYS
 - EXISTING SWALE/DITCH TO REMAIN
 - NEW FILTER DRAIN MAINTAINED BY NATIONAL HIGHWAYS
 - OUTFALL MAINTAINED BY NATIONAL HIGHWAYS
 - OUTFALL MAINTAINED BY NOTTINGHAMSHIRE COUNTY COUNCIL
 - DIRECTION OF FLOW TO OUTFALL
 - ACCESS AND MAINTENANCE TRACK (INCLUDES CUTOFF DRAIN) MAINTAINED BY NATIONAL HIGHWAYS
 - EMBANKMENT
 - CUTTING
 - CATCHMENT C13
 - CATCHMENT C14
 - CATCHMENT C15
 - CATCHMENT C16
 - CATCHMENT C17
 - CATCHMENT C18
 - CATCHMENT C19
 - CATCHMENT C20
 - CATCHMENT C21



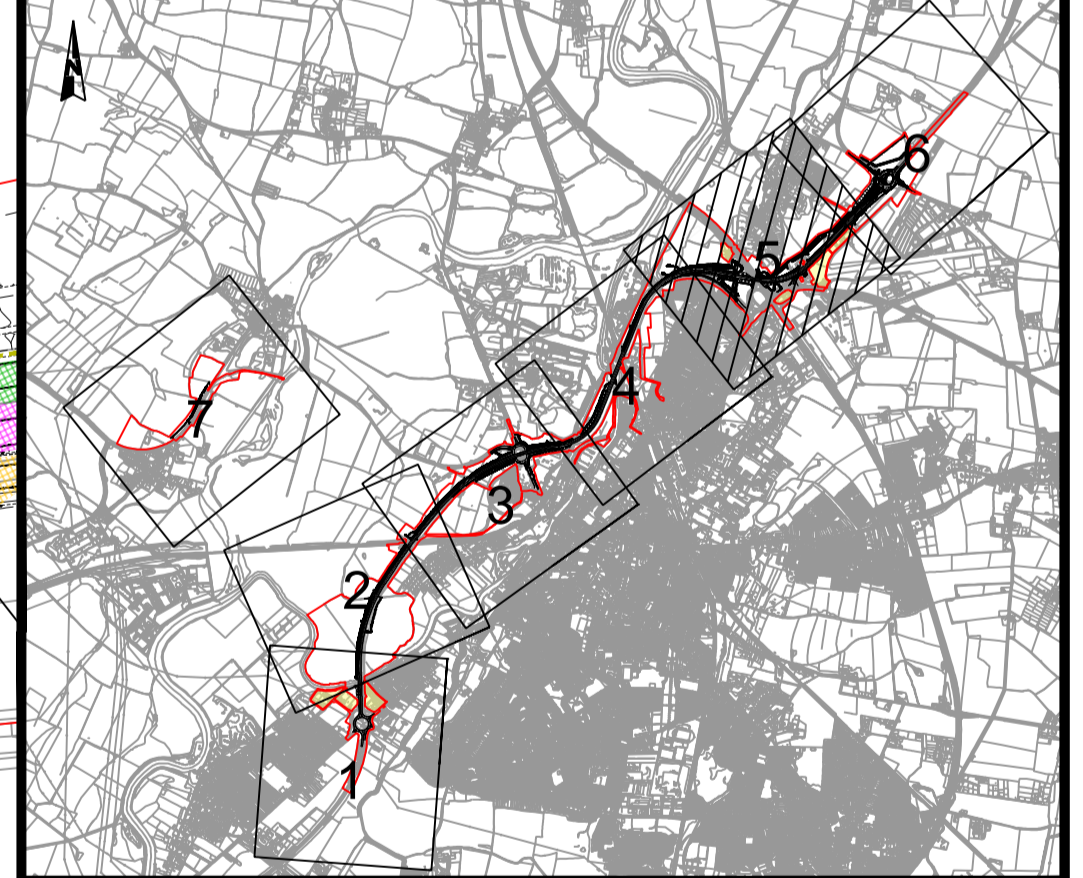
C02	11/03/24	Revised for DCO Submission	JK	SC	HF
REV.	DATE	AMENDMENT DETAILS	ORIG	CHK'D	APP'D
CLIENT national highways					
PURPOSE OF ISSUE DCO APPLICATION					
DEVELOPMENT CONSENT ORDER NUMBER TR010065					
PROJECT TITLE A46 NEWARK BYPASS					
DRAWING TITLE DRAINAGE ENGINEERING PLAN REGULATION 5(2)(o), 5(2)(P) and 6(2) SHEET 4 OF 7					
ORIGINAL SIZE	A1	SCALE	1:2500		
DRAWING NUMBER	ORIGINATOR	VOLUME	PROJECT REF NO.		
HE551478	SKAG	HDG	HE551478		
CONWI_CONW	DR	CD	26304	REVISION	
LOCATION	TYPE	ROLE	NUMBER	C02	





- NOTES**
1. ALL DIMENSIONS ARE IN METRES UNLESS OTHERWISE STATED.
 2. DO NOT SCALE FROM THIS DRAWING USE ONLY PRINTED DIMENSIONS.
 3. THE DESIGN SHOWN WILL BE SUBJECT TO DETAILED DESIGN DEVELOPMENT IN ACCORDANCE WITH THE PROVISIONS OF THE DEVELOPMENT CONSENT ORDER (TR010065/APP/3.1).
 4. THE NAMING OF THE CATCHMENT AREAS ARE TO DIFFERENTIATE BETWEEN THEM AND ARE FOR THE PURPOSE OF THE DRAINAGE ENGINEERING PLANS ONLY.
 5. THESE DRAINAGE PLANS SHOULD BE READ IN CONJUNCTION WITH ALL OTHER RELEVANT PLANS AND DOCUMENTATION.

- KEY**
- ORDER LIMITS
 - LAND NOT INCLUDED IN ORDER LIMITS
 - MAIN RIVER MAINTAINED BY ENVIRONMENT AGENCY
 - ORDINARY WATERCOURSE MAINTAINED BY NOTTINGHAMSHIRE COUNTY COUNCIL
 - OVERFLOW BASIN MAINTAINED BY NATIONAL HIGHWAYS
 - MAIN BASIN MAINTAINED BY NATIONAL HIGHWAYS
 - POND MAINTAINED BY NATIONAL HIGHWAYS
 - BASIN FOREBAY MAINTAINED BY NATIONAL HIGHWAYS
 - FLOW PATH MAINTAINED BY NATIONAL HIGHWAYS
 - NEW SWALE/DITCH MAINTAINED BY NATIONAL HIGHWAYS
 - EXISTING SWALE/DITCH TO REMAIN
 - NEW FILTER DRAIN MAINTAINED BY NATIONAL HIGHWAYS
 - OUTFALL MAINTAINED BY NATIONAL HIGHWAYS
 - OUTFALL MAINTAINED BY NOTTINGHAMSHIRE COUNTY COUNCIL
 - DIRECTION OF FLOW TO OUTFALL
 - ACCESS AND MAINTENANCE TRACK (INCLUDES CUTOFF DRAIN) MAINTAINED BY NATIONAL HIGHWAYS
 - EMBANKMENT
 - CUTTING
 - WETLAND SHELF TO ACCOMMODATE FLOOD COMPENSATION
 - CATCHMENT C15
 - CATCHMENT C16
 - CATCHMENT C17
 - CATCHMENT C18
 - CATCHMENT C19
 - CATCHMENT C20
 - CATCHMENT C21
 - CATCHMENT C22
 - CATCHMENT C23
 - CATCHMENT C24
 - CATCHMENT C25



C02	11/03/24	Revised for DCO Submission	JK	SC	HF
REV.	DATE	AMENDMENT DETAILS	ORIG	CHK'D	APP'D

CLIENT
 national highways

PURPOSE OF ISSUE
 DCO APPLICATION

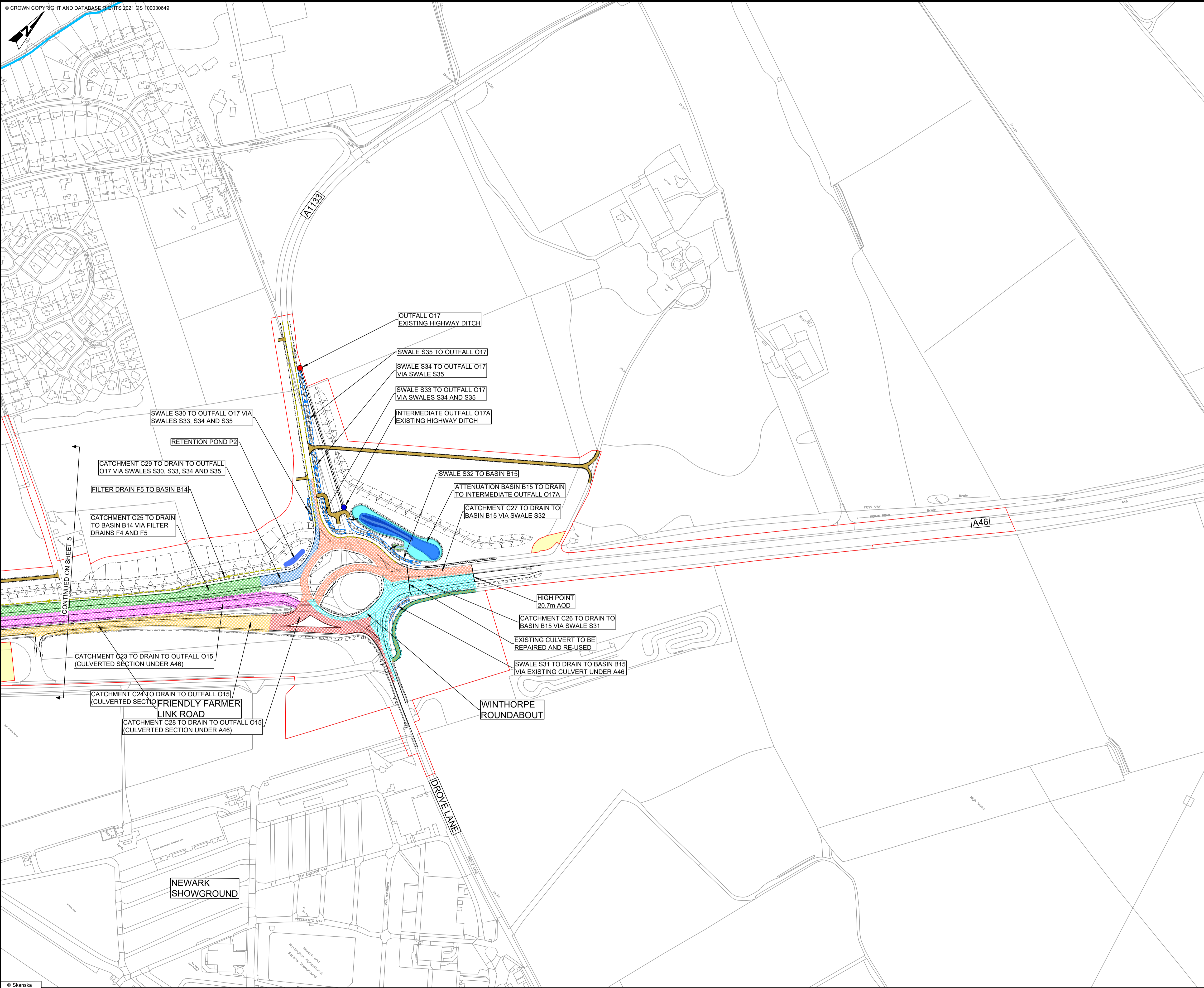
DEVELOPMENT CONSENT ORDER NUMBER
 TR010065

PROJECT TITLE
 A46 NEWARK BYPASS

DRAWING TITLE
 DRAINAGE ENGINEERING PLAN
 REGULATION 5(2)(o), 5(2)(P) and 6(2)
 SHEET 5 OF 7

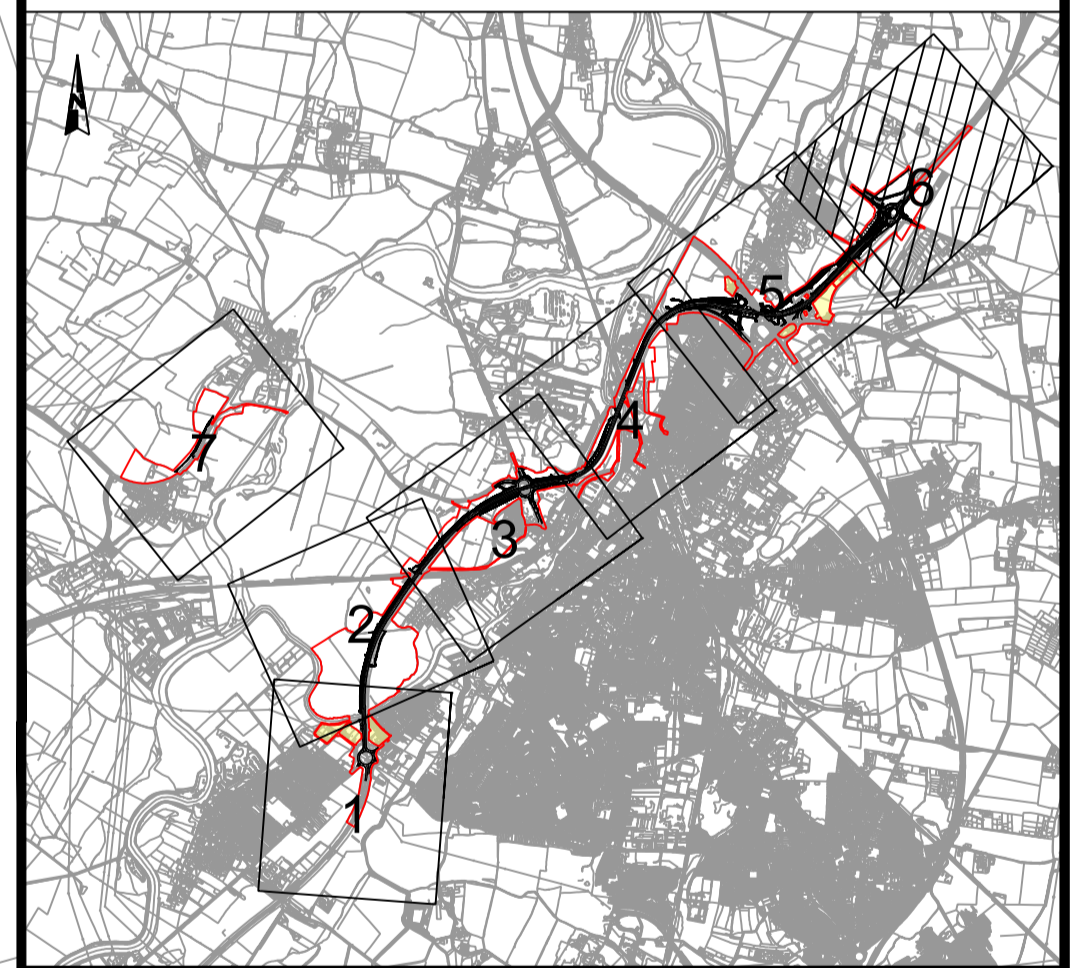
ORIGINAL SIZE	A1	SCALE	1:2500
DRAWING NUMBER	HE PIN	ORIGINATOR	VOLUME
HE551478	SKAG	HDG	

PROJECT REF NO.	HE551478
REVISION	C02
LOCATION	CONWI_CONW
TYPE	DR CD
NUMBER	26305



- NOTES**
1. ALL DIMENSIONS ARE IN METRES UNLESS OTHERWISE STATED.
 2. DO NOT SCALE FROM THIS DRAWING USE ONLY PRINTED DIMENSIONS.
 3. THE DESIGN SHOWN WILL BE SUBJECT TO DETAILED DESIGN DEVELOPMENT IN ACCORDANCE WITH THE PROVISIONS OF THE DEVELOPMENT CONSENT ORDER (TR010065/APP/3.1).
 4. THE NAMING OF THE CATCHMENT AREAS ARE TO DIFFERENTIATE BETWEEN THEM AND ARE FOR THE PURPOSE OF THE DRAINAGE ENGINEERING PLANS ONLY.
 5. THESE DRAINAGE PLANS SHOULD BE READ IN CONJUNCTION WITH ALL OTHER RELEVANT PLANS AND DOCUMENTATION.

- KEY**
- ORDER LIMITS
 - LAND NOT INCLUDED IN ORDER LIMITS
 - MAIN RIVER MAINTAINED BY ENVIRONMENT AGENCY
 - ORDINARY WATERCOURSE MAINTAINED BY NOTTINGHAMSHIRE COUNTY COUNCIL
 - OVERFLOW BASIN MAINTAINED BY NATIONAL HIGHWAYS
 - MAIN BASIN MAINTAINED BY NATIONAL HIGHWAYS
 - POND MAINTAINED BY NATIONAL HIGHWAYS
 - BASIN FOREBAY MAINTAINED BY NATIONAL HIGHWAYS
 - FLOW PATH MAINTAINED BY NATIONAL HIGHWAYS
 - NEW SWALE/DITCH MAINTAINED BY NATIONAL HIGHWAYS
 - EXISTING SWALE/DITCH TO REMAIN
 - NEW FILTER DRAIN MAINTAINED BY NATIONAL HIGHWAYS
 - OUTFALL MAINTAINED BY NATIONAL HIGHWAYS
 - OUTFALL MAINTAINED BY NOTTINGHAMSHIRE COUNTY COUNCIL
 - DIRECTION OF FLOW TO OUTFALL
 - ACCESS AND MAINTENANCE TRACK (INCLUDES CUTOFF DRAIN) MAINTAINED BY NATIONAL HIGHWAYS
 - EMBANKMENT
 - CUTTING
 - CATCHMENT C23
 - CATCHMENT C24
 - CATCHMENT C25
 - CATCHMENT C26
 - CATCHMENT C27
 - CATCHMENT C28
 - CATCHMENT C29



C02	11/03/24	Revised for DCO Submission	JK	SC	HF
REV.	DATE	AMENDMENT DETAILS	ORIG	CHK'D	APP'D

CLIENT
 national highways

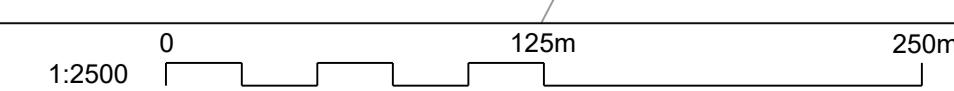
PURPOSE OF ISSUE
 DCO APPLICATION

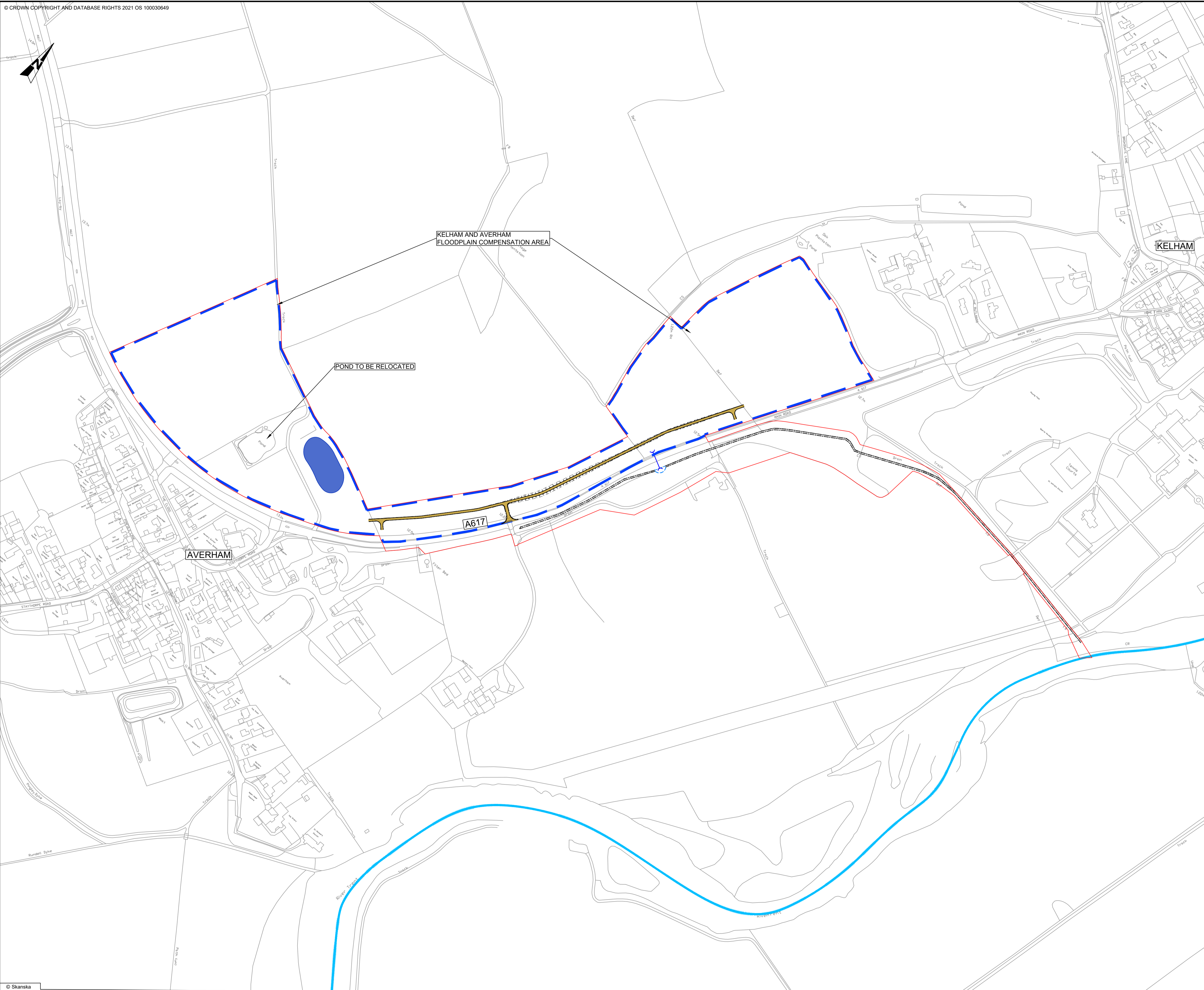
DEVELOPMENT CONSENT ORDER NUMBER
 TR010065

PROJECT TITLE
 A46 NEWARK BYPASS

DRAWING TITLE
 DRAINAGE ENGINEERING PLAN
 REGULATION 5(2)(o), 5(2)(P) and 6(2)
 SHEET 6 OF 7

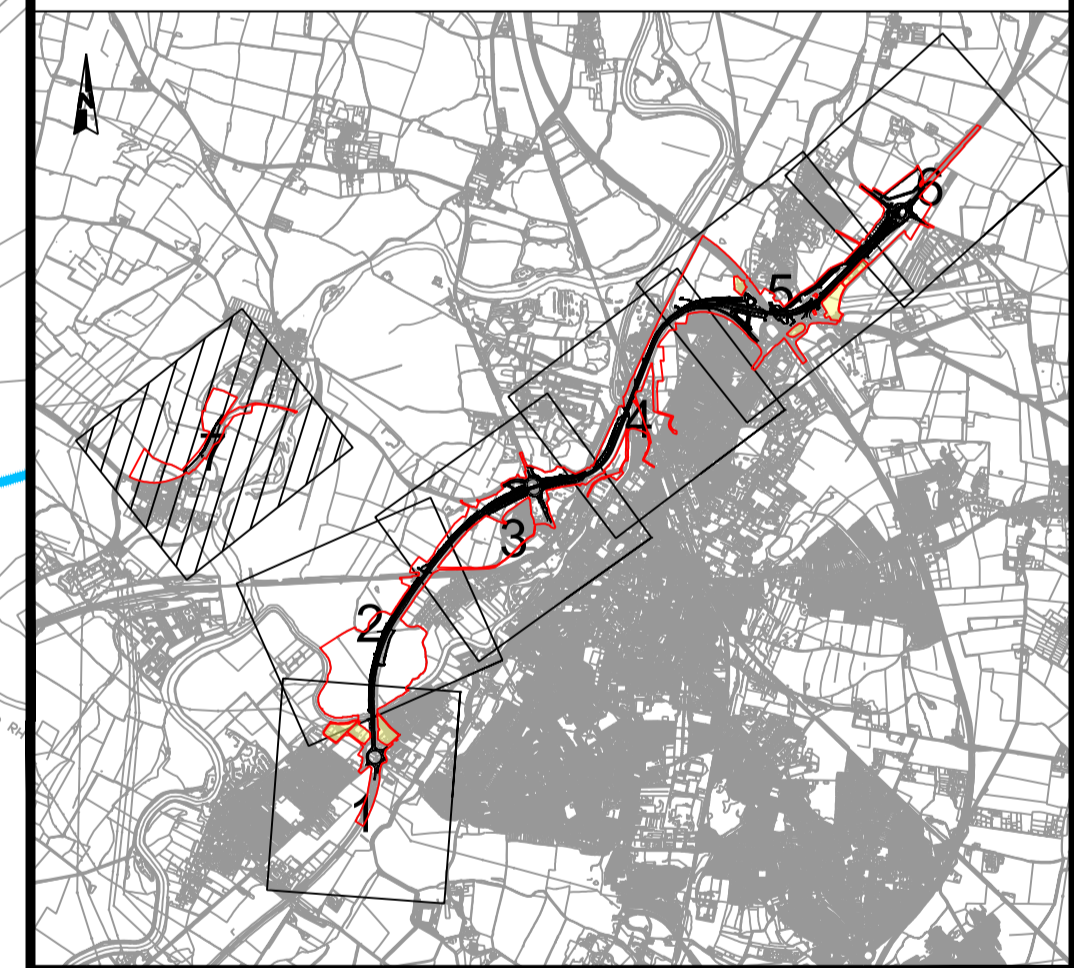
ORIGINAL SIZE	A1	SCALE	1:2500	PROJECT REF NO.	HE551478
DRAWING NUMBER	HE551478	ORIGINATOR	SKAG	VOLUME	HDG
LOCATION	CONWI_CONW	TYPE	DR CD	NUMBER	26306
REVISION	C02				





- NOTES**
1. ALL DIMENSIONS ARE IN METRES UNLESS OTHERWISE STATED.
 2. DO NOT SCALE FROM THIS DRAWING USE ONLY PRINTED DIMENSIONS.
 3. THE DESIGN SHOWN WILL BE SUBJECT TO DETAILED DESIGN DEVELOPMENT IN ACCORDANCE WITH THE PROVISIONS OF THE DEVELOPMENT CONSENT ORDER (TR010065/APP/3.1).
 4. THE NAMING OF THE CATCHMENT AREAS ARE TO DIFFERENTIATE BETWEEN THEM AND ARE FOR THE PURPOSE OF THE DRAINAGE ENGINEERING PLANS ONLY.
 5. THESE DRAINAGE PLANS SHOULD BE READ IN CONJUNCTION WITH ALL OTHER RELEVANT PLANS AND DOCUMENTATION.

- KEY**
- ORDER LIMITS
 - MAIN RIVER MAINTAINED BY ENVIRONMENT AGENCY
 - EXISTING SWALE/DITCH TO REMAIN
 - NEW SWALE/DITCH MAINTAINED BY NATIONAL HIGHWAYS
 - NEW PIPED CULVERT
 - LIMITS OF DEVIATION OF FLOOD COMPENSATION AREA
 - RELOCATED POND MAINTAINED BY NATIONAL HIGHWAYS
 - ACCESS AND MAINTENANCE TRACK (INCLUDES CUTOFF DRAIN) MAINTAINED BY NATIONAL HIGHWAYS
 - EMBANKMENT
 - CUTTING



C02	29/02/24	DCO Application	SG	EJ	HF
REV.	DATE	AMENDMENT DETAILS	ORIG	CHK'D	APP'D

CLIENT
 national highways

PURPOSE OF ISSUE
 DCO APPLICATION

DEVELOPMENT CONSENT ORDER NUMBER
 TR010065

PROJECT TITLE
 A46 NEWARK BYPASS

DRAWING TITLE
 DRAINAGE ENGINEERING PLAN
 REGULATION 5(2)(o), 5(2)(P) and 6(2)
 SHEET 7 OF 7

ORIGINAL SIZE	A1	SCALE	1:2500
DRAWING NUMBER	HE PIN	ORIGINATOR	VOLUME
HE551478	SKAG	HDG	
CONWI_CONW	DR	CD	26307
LOCATION	TYPE	ROLE	NUMBER
PROJECT REF NO.	HE551478		
REVISION	C02		

